



High Density Mobile Storage



nationwideshelving.com
AMERICA'S SHELVING SUPERSTORE™

**Call Now for a Free
Quote or Site Visit!**

2180 S. Constitution Blvd.
Salt Lake City, UT 84119
801-328-8788 or 800-326-4403
www.NationWideShelving.com

NationWide

Shelving.com AMERICA'S SHELVING

SUPERSTORE!



REDEFINE STORAGE CAPACITY

Mizer Mobile Systems are innovative storage systems with carriages running on wheels and tracks. Shelving units can be closely packed when access is not required, but can be moved to create an aisle when needed. Eliminating the need for permanent aisle space creates a smaller storage footprint, or higher capacity storage compared to typical fixed shelving. Mizer mobiles are professionally installed on level tracks with mechanical assist handles, making it possible to move very heavy loads with minimal effort.

Made in Calgary, Alberta Mizer Mobiles are one of the most reliable mechanical mobile shelving systems in the world, requiring almost zero maintenance. Mizer has an incredibly low cost of ownership, and provides a quick return on investment—often less than a year. If you store anything, make the smart, confident, one-time investment in a Mizer Mobile System.



MIZER MECHANICAL ASSIST

Mizer Mechanical Assist mobiles are suited to light and heavy duty applications. The ergonomic crank handle can move 3,000lbs per 1lb of force, making loads up to 40,000lbs easy to move for almost any user. Mizer's Mechanical Assist is the most popular line of Mizer Mobiles across all applications.

INTRODUCING THE MIZER FAMILY

Colorado by Mizer is an economical, manual powered (push/pull) mobile system for medium and light duty applications.



COLORADO PUSH/PULL

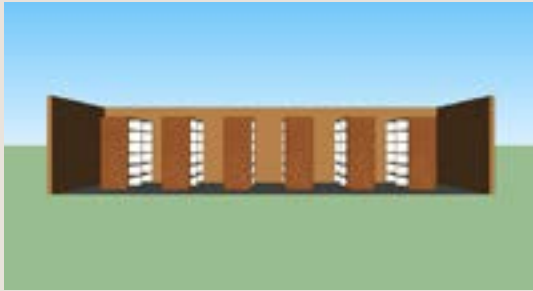
Quicksilver by Mizer is a light weight, light duty aluminum carriage system. Also available in movable aisle option.



QUICKSILVER LIGHT DUTY



MAXIMIZE CAPACITY OR MINIMIZE FOOTPRINT? THE CHOICE IS YOURS



Typical Shelving

Six shelving units with seven standard aisles completely occupy a 444 square foot room, leaving little potential for growth and limiting the profitability of the space.



Maximized Storage Capacity

Ten mobilized shelving units can occupy the same 444 square feet, increasing storage capacity by 67%.

Maximizing storage is great for growing companies, centralizing storage, having on-site access, and more.



Minimized Storage Footprint

The six shelving units can also be compacted to free up 40% of the square footage.

The saved space can be used for adding two complete workstations, expanding a showroom, building an office, or whatever your business needs.



The Alberta South Health Campus lowered construction costs, their refrigerated storage footprint, and ongoing utility usage by utilizing Mizer Mobile systems throughout the hospital.

MAKE A GREEN IMPACT & SAVE

Mizer Mobile Shelving can contribute to your green initiatives and lower your long term investment by making the most efficient use of your space, leading to:

Sustainable Building Footprints

By increasing on-site storage capacity as much as 50 to 100 percent, Mizer mobile shelving can help eliminate building expansion and preserve open space.

Reduced Energy Consumption

By compacting storage to reduce building size, Mizer systems can save on energy consumption over the life of the building

Reduced Materials and Resources Consumption

By reducing storage footprints, buildings can be built smaller and with less material consumption, lowering the up-front cost of construction.

INSTALL MIZER ANYWHERE



Surface Mount *Simple & Economical*

Ideal for areas where floor modification must be avoided. No grout or anchors are required.



Raised Deck Combination Ramp *Discreet & Safe*

For high usage, high visibility systems that require a finished appearance.



Surface Mount with Ramp *Economical & Safe*

Where floor modification must be limited, graduated ramp for carts or reducing trip hazards.



Track Embedded into Floor *Discreet & Flush with Floor*

For permanent locations and pre-construction planning.



Raised Deck with Steel Ramp *Safe, Even Deck*

For high usage, tracks are flush in the deck with a steel ramp at the entrance.

Not sure which track system is best for you?

Talk to your local Mizer dealer about which track system meets your safety, appearance, and budgetary goals. Mizer offers a system to fit any need!

REALIZE THE PROFITABILITY OF ANY SPACE



Active Files Storage
Global Training Centre



Artifacts & Archive Storage
Museum of the Highwood



Evidence Storage
DEA Washington DC



Metro Wire Storage
AHS South Health Centre



Tire Storage
Jack Carter GMC Chevrolet



Retail Storage
The Source

Energy Companies
Auto Dealerships
Parts & Service Centres
Government Offices
Architectural Firms
Network Companies
Law Firms
Law Libraries
Law Enforcement
Municipalities
Military Bases
Human Resources
Museums, Archives
Laboratories
Warehouses
Retail Outlets
Universities
Schools
Libraries
Hospitals
Pharmacies
Clinics
Jails / Remand Centres

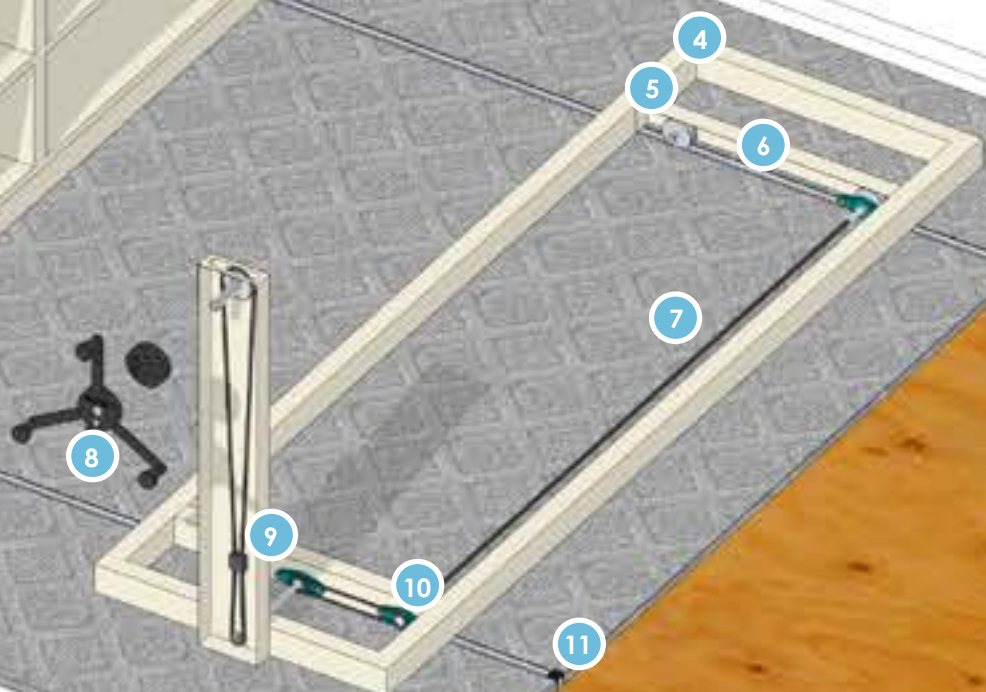
Mizer can store virtually anything!



A VISUAL GUIDE TO MIZER



- 1 End Panel
- 2 Aluminum Panel Bar
- 3 Ergonomic Handle
- 4 Box Frame Carriage
- 5 Dual Flange Wheel
- 6 Cross Member
- 7 Drive Axel
- 8 Locking Mechanism
- 9 Chain Tightener
- 10 Flange Bearing
- 11 Track



THE MIZER ADVANTAGES



INDUSTRY LEADING Lifetime Warranty

As a reflection of our unwavering commitment to quality, Mizer offers the industry leading Lifetime Warranty so you have complete peace of mind. It's included in the price of your system. Don't accept 5 years or even 10 years; demand Mizer's Lifetime Warranty.



INDUSTRY LEADING Automatic Drive Chain Tightener

Mizer's self-adjusting chain tightener requires virtually no maintenance, unlike other mechanical assist systems that have built-in access panels for costly service calls.



INDUSTRY LEADING Box Frame Carriage

Light-weight or heavy-duty, Mizer is built on a Box Frame carriage, where other systems use "C" channel carriages. Box Frame carriages have higher bending and torsional stiffness, making Mizer stronger at a lower profile so you can further maximize your shelf space.



INDUSTRY LEADING 100% Guide Wheels

All Mizer systems use 100% dual flanged guide wheels to ensure units won't derail. Don't settle for inferior systems with combinations of single-flanged or non-guided glide wheels.



Available Balanced Drive

For heavy duty systems, balanced drive is a must, distributing power to both ends of the carriage equally. This reduces torque on the carriage and hardware. Other systems use end-drive systems disguised as balanced drive. Mizer offers true power distribution.



Aluminum End Panel Bars

Eliminate the risk of pinched fingers, protect the finished edges of your end panels, and complete your Mizer system's appearance.



Made in Canada, Ships to America for Cheap

We've been proudly building Mizer Mobiles since 1998. Our Mizer manufacturing team boasts the ultimate commitment to safety and quality.

Creative Storage Solutions

The stockroom is the heart of your store – if you're out of stock, you're out of business. A properly organized mobile shelving system will efficiently store your products and has the potential to nearly double your capacity. That means more stock, a greater selection, and better business.

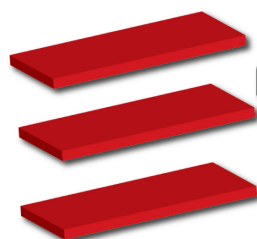


MIZER

Mizer Mobiles

Division of Stelterr Factory Direct Ltd.

Dealers across North America



nationWideShelving.com
AMERICA'S SHELVING SUPERSTORE™

801-328-8788